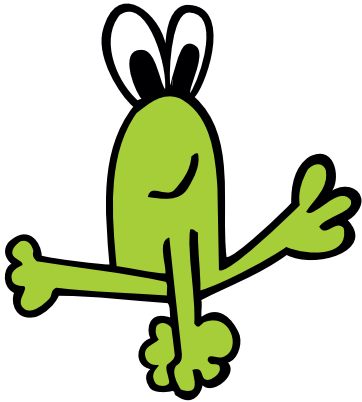


Leap Year Word Search



leap year
calendar
month
February
extra
twenty nine
bissextile
Caesar
intercalary

Y	B	O	E	Q	M	R	T	W	E	Y	L
R	V	I	B	X	A	X	G	E	R	O	E
A	F	G	S	S	T	B	T	A	H	E	A
U	V	Z	A	S	F	R	L	X	M	Q	P
R	W	E	K	V	E	A	A	L	C	B	Y
B	C	B	F	N	C	X	S	K	R	C	E
E	M	Z	P	R	M	B	T	E	G	A	A
F	T	W	E	N	T	Y	N	I	N	E	R
J	Z	T	Y	R	A	D	N	E	L	A	C
R	N	M	O	N	T	H	C	S	C	E	O
I	Y	A	C	I	S	Y	Y	B	W	P	U
J	K	Q	W	T	T	K	N	C	A	A	T

Why do we have a leap year?

The simple reason for leap year is that the earth revolves around the sun in approximately 365.25 days, and so to make sure that a calendar year is the same as a tropical year (which is the period of earth's revolution), there needs to be